



M/V A. W. Bayer



M/V Marty B.



M/V William Jeffrey Bayer



M/V Ni-Me-He

Not pictured: M/V Jeffrey Lynn, M/V Mt. Vernon Switcher



MT. VERNON BARGE SERVICE RIVER CENTER



Located at Ports of Indiana—Mt. Vernon.
Mile 828 on the Ohio River.

MT. VERNON BARGE SERVICE

a Division of

TPG Mt. Vernon Marine, LLC,
a Transmodal Performance Group Company

Don W. Miller, Jr., President

Daniel B. Altman, CEO

Patrick J. Mulligan, V.P. - Marketing & Logistics

P. O. Box 607
Mt. Vernon, IN 47620

Phone: 812.838.4889
Fax: 812.838.8045

**THE SHORTEST
DISTANCE BETWEEN
TWO PORTS**



- HARBOR SERVICES
- FLEETING
- BARGE CLEANING
- BARGE REPAIR-
DRYDOCK
- STEVEDORING



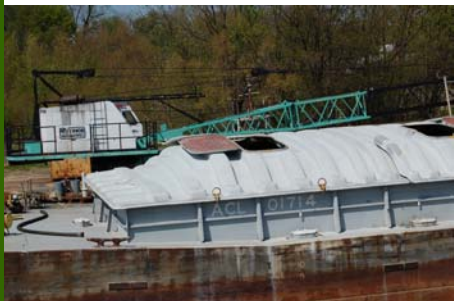
Located at **Mile 828** on the **Ohio River** in the Mt. Vernon, Indiana / Southwind Maritime Center harbor, Mt. Vernon Barge Service has provided quality **harbor, repair and cleaning services** to the Inland Waterways Industry for almost 50 years.

Barge Cleaning:

Mt. Vernon Barge Service has one of the finest **cleaning facilities** on the Ohio River, holding up to six barges and cleaning up to three barges at one time. We have all our EPA water department permits and a high capacity containment barge.

Barge Repair/Drydock:

Mt. Vernon Barge Service has the only **full-size drydock** from Mile 606 to Mile 846 to meet all your repair needs. We have an **experienced repair crew** that can handle your top side, steel cover and fiberglass cover repairs on site.



Stevedoring:

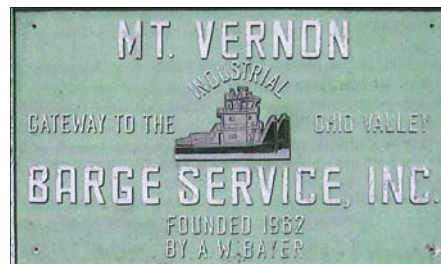
Mt. Vernon Barge Service has two piers for its **stevedoring services**.

Pier #2:

- Manitowoc 3900 crawler crane
- Barge hold (2) Work (1)
- Barge to truck
- Truck access/scales
- Access to rail (CSX & Evansville & Western, E & W)
- Hours of Operation: M - F, 7 am — 3:30 pm, or as needed
- Barge stevedoring

Pier #3:

- Manitowoc 3900 crawler crane
- Barge capacity (2)
- Barge to truck
- Truck access/scales
- Access to rail (CSX & Evansville & Western, E & W)
- Hours of Operation: M - F, 7 am — 3:30 pm, or as needed
- Loader (13,000 capability)
- Fork lifts (13,000 capability)
- Barge stevedoring
- Can hold 3 barges on ground storage (corn, coke, gypsum)



Harbor Service:

Mt. Vernon Barge Service has **six tugboats** to meet all your needs, serving 16 docks in the Mt. Vernon/Southwind Maritime Center harbor.

Fleeting:

Mt. Vernon Barge Service maintains a 24 hour a day closed harbor with space to accommodate over 500 barges year round. We maintain a liquid/petroleum (red flag) barge fleet capable of holding 15 barges which is secured around the clock 365/24.

FOR MORE INFORMATION, CONTACT:

**Wayne McDonald, General Manager
MT. VERNON BARGE SERVICE**

Phone: 812.838.4889

Cell: 812.461.7381

Email: W.McDonald@MVBarge.com

